

# Amphenol Sensors

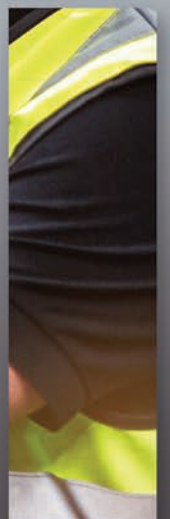
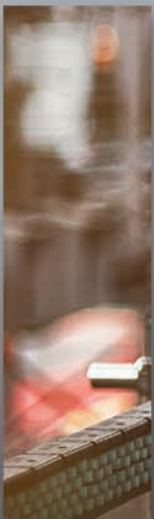
Connecting your world through  
Sensor Innovations

## Industrial Process Control

Amphenol Sensors is a leading innovator in sensor technologies and measurement solutions. Offering the most diverse sensor portfolio of standard and customized products for the world's most demanding regulatory and industry-driven applications, Amphenol creates value by providing critical information for real-time decisions.

Process controls are key for industrial efficiency and safety. By monitoring, measuring, and controlling process equipment and conditions, a producer not only ensures product consistency and quality, but also product profitability.

From the equipment that keeps your process moving to the fluids, air and gases needed during production, and robotics for automation, Amphenol Sensors provides sensor solutions every step of the way.



# Amphenol Sensors

## Industrial Process Control Sensor Solutions

- Temperature
- Pressure
- Gas
- Humidity
- Vibration
- Speed & Position
- Level
- Flow

### Process Equipment

- Boiler Control
- Modulating/Furnace Controls
- Motor Monitoring
- Pump Monitoring
- Gearbox Monitoring
- Fluid Handling Equipment Monitoring
- Proximity Sensing
- Distance Measurement



### Process Fluids

- Fluid Temperature
- Fluid Pressure
- Fluid Level
- Flow Control



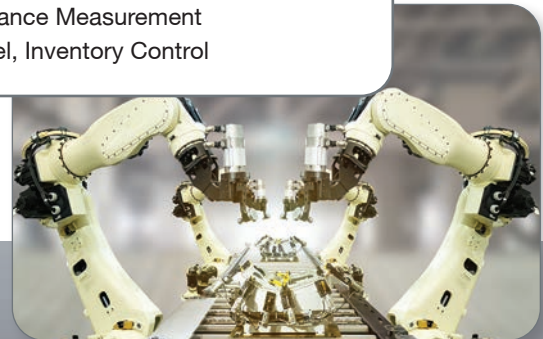
### Process Gases

- Gas Pressure
- Gas Leakage
- Gas Concentration
- Process Waste Gases
- Gas Flow control
- Humidity



### Process Automation

- Machinery Condition Monitoring
- Robotics
- Factory Automation
- Human-Machine Interface (HMI)
- Guidance Systems
- Automatic Guided Vehicles (AGV)
- Joystick
- Proximity Sensing
- Distance Measurement
- Level, Inventory Control



### Process Air

- Airflow Rate
- Airflow Pressure
- Duct Airflow
- Compressed Air
- Airflow Control



## PROCESS EQUIPMENT

### Temperature Sensors

- High accuracy and stability for increased efficiency and performance
- Robust design for harsh environments
- Thermal cut-off fuses allow for added safety features
- Customization options



### Ultra Low Pressure Sensors

- High stability and repeatability
- High accuracy • Compact package size



### Vibration Sensors

- Monitor equipment to ensure efficient operation
- Early fault detection • Compact sensor placement
- Real-time data feedback of live conditions
- Meets environmental and hazardous area requirements



### Position Linear Sensors and Level Transmitters

- Absolute, non-contact measurement
- Highest reliability
- Robust design for harsh environments
- ATEX Certified



### Ultrasonic Air Transducers

- Non-contact sensing
- Multiuse: liquid or solid level, flow control, proximity sensing
- Rugged IP68



## PROCESS GASES

### Pressure Sensors

- Media compatibility • Output repeatability
- Robust design • Long-term stability
- High accuracy • Compact package size
- Stainless Steel for durability



### Gas Sensors

- ATEX certified • Selective gas detection
- High accuracy and range
- Long life • Low power usage



### Humidity Sensors

- Duct- and wall-mounted transmitters
- Fully-calibrated OEM sensors
- Connectivity to building automation systems



### Position Linear Sensors and Level Transmitters

- Absolute, non-contact measurement
- Highest reliability
- Robust design for harsh environments
- ATEX Certified



## PROCESS AIR

### Pressure Sensors

- Media compatibility • Output repeatability
- Robust design • Long-term stability
- High accuracy • Compact package size
- Media-isolated for fluid compatibility
- Stainless steel for durability



### Ultra Low Pressure Sensors

- Measure, monitor, and control air flow and air pressure
- High stability and repeatability
- High accuracy • Compact package size



### Position Linear Sensors and Level Transmitters

- Absolute, non-contact measurement
- Highest reliability
- Robust design for harsh environments
- ATEX-Certified



## PROCESS FLUIDS

### Temperature Sensors

- High accuracy and stability for increased efficiency and performance
- High temperature range
- Fast response time
- Robust design for harsh environments
- Customization options



### Pressure Sensors

- Media compatibility • Output repeatability
- High accuracy • Compact package size
- Stainless steel for long-term stability



### Level Sensors

- Ultrasonic • High accuracy
- Multiple output options • Multiple distance options
- Customizable options

### Position Linear Sensors and Level Transmitters

- Absolute, non-contact measurement
- Highest reliability
- Robust design for harsh environments
- ATEX Certified



## PROCESS AUTOMATION

### Position Sensors

- Non-contact inductive and hall-effect technologies • Long life
- Suitable for harsh environments
- Excellent resolution and precision
- Modular, compact and lightweight design
- Custom linear and rotary position feedback



### Speed Sensors

- Long life • Low hysteresis • Field-proven
- Custom connectors and wires



### Vibration Sensors

- Monitor equipment to ensure efficient operation
- Early fault detection • Compact sensor placement
- Real-time data feedback of live conditions
- Meets environmental and hazardous area requirements
- Various process signals for control-system inputs



### Position Linear Sensors and Level Transmitters

- Absolute, non-contact measurement
- Highest reliability
- Robust design for harsh environments
- ATEX Certified



### Ultra Low Pressure Sensors

- Measure, monitor, and control air flow and air pressure
- High stability and repeatability
- High Accuracy
- Compact package size



### Ultrasonic Air Transducers

- Non-contact sensing
- Multiuse: liquid or solid level, flow control, proximity sensing
- Rugged IP68



# Amphenol Sensors



*Scan the QR code to  
access our library of  
resources*

[www.amphenolsensors.com](http://www.amphenolsensors.com)

**Amphenol  
Sensors**

© 2025 Amphenol Corporation. All Rights Reserved. Specifications are subject to change without notice.

Other company names and product names used in this document are the registered trademarks of their respective owners.

AS-BR-260E - 01/2025